

# TAUBER-ARONS INC. PUBLIC AUCTION

By Order of Board of Directors

**THURSDAY      APRIL 22      10:30 AM**

## "COSMETIC MFG. & PACKAGING"

(Closing Mfg. Operations)

**CREATIVE SOLUTIONS COSMETICS  
LABORATORIES & MFG. INC.**

**10955 Arrow Rte. #103, Rancho Cucamonga, CA**

*Filling Lines*

*Labeling &  
Packaging*

*SS Tanks*



CVC 300 Labeler

**For An  
Auction Calendar  
Visit Our Website:  
[www.tauberaronsinc.com](http://www.tauberaronsinc.com)**

**DIRECTIONS:**

From Downtown LA, Take  
The San Bernardino Fwy.  
(10) East Past The Ontario  
Airport to The Haven Ave.  
Offramp, North on Haven  
(From The 210, South on  
Haven) To Arrow Rte., East  
on Arrow Rte. to Sale Site!!!

**BidSpotter** Your portal to LIVE Auction Action

With Bidspotter.com, you can bid on items in auctions from anywhere in the world! Bid from the convenience of your home or office!  
Real time internet bidding and audio - No special software needed, use your browser!  
To register to bid in the Tauber Arons, Inc. auction, please visit us at [www.bidspotter.com](http://www.bidspotter.com) or call (219) 348-2437.

**INSPECTION: Wednesday, April 21, 9AM to 4PM & Morning of the Sale.**

### TERMS OF SALE

A deposit of 25% in cash, cashier's check, or company check is required of each bidder for deposit only. Total to be paid within time specified by auctioneer in cash, cashier's check, or wired funds before removal of purchase. All purchases must be removed within period announced by auctioneer. All descriptions are believed to be correct, but no guarantees or warranties are made by auctioneer as to nomenclature or age. Everything sold on an "as is" basis.

**ALL SALES WILL BE SUBJECT TO LOCAL & STATE SALES TAX.**

**A 12% BUYERS' PREMIUM WILL BE COLLECTED ON ALL PURCHASES.**

**Brochure Designed & Dedicated To The Memory Of Craig F. Tucker**

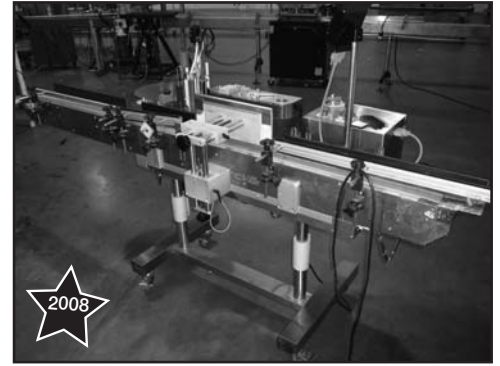
# FILLING LINES (Lines To Be Offered As Lines & Individually)



#1 – 20oz & 6oz U.S. Bottlers Filling Line



Kaps All 200 Capper

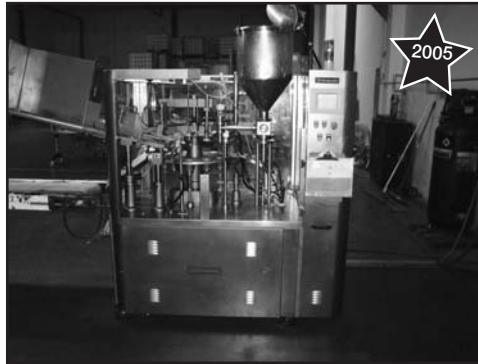


CVC 300 Labeler

**#1 – 20oz & 6.6oz Lotion Filling Line:** **U.S. Bottler** Mod. VC30LS, 30-Sta. Rotary Gravity Filler S/N 1243; **Kaps All** Auto. 200 In Line Capper w/Cap Sorter Feeder S/N C-8-C-LC-LR-0340; **(2008) CVC** Mod. CVC300 Labeler w/Lazy Susan. S/N 09701052



#2 – 20oz MRM 12-Sta. Filler



Vanguard VF100TA H.S. Tube Filler

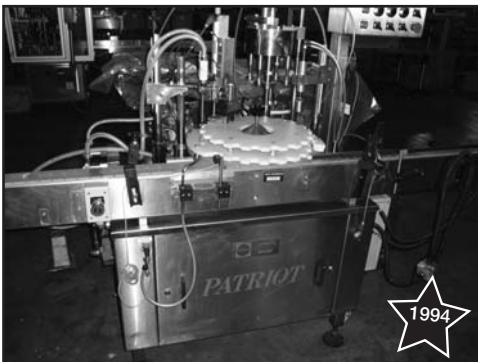


MRM Elgin Titan Filling Line

**#2 – 20oz Lotion Filling Line:** **MRM** 12-Sta. Jar Filler; 200J.P.M. Panel View 1000 Controls; SS Pump; Pillar Foiler; **Video Jet** Excel Coder; **ELF** Tightener; **Best Pack** Taper.

**#4 - (2005) Vanguard** Mod. VF100TA H.S. Tube Filler w/**Siemens** Controller. S/N 05122

**#5 - 8-16oz Line:** **MRM** Elgin Titan 6-Head Piston Filler; **MRM** Versa Capper III Capper w/Cap Sorter & Elevator w/Plastic Table Top Conveyor.



Kalish Patriot FPC-211  
Filler/Plugger/Capper

**#6 – (1994) Kalish Patriot Capmatic** FPC-211 Filler/Plugger/Capper w/Cap Elevator & Plastic Table Top Off Feed Conveyor. S/N PA94030093

**#7 – Comas Cavalla** Mod. FC7 Filler/Capper w/Cap Feeder & Conveyor. S/N 190-97

**Contemplating Selling Your Facility?**

**Contact Tauber-Arons**

**For A Confidential Consultation.**

**(323) 851-2008**

**(888) 648-2249**

**INSPECTION: Wednesday, April 21, 9 to 4 & Morning of Sale.**

## FILLING LINES (Lines To Be Offered As Lines & Individually)



Comas Cavalla Filler



Comas Cavalla Filler



Lee 250 Gal. Sweep Jacketed Kettle

**#8 – Powder Filling Line:** MRM 4" Rotary Pressure Filler w/AV Panel View 1000 Controls & Pillar Foiler.

**Comas** Metal Tube Filler w/Argus Laeius Controller. S/N 720N-7-80

**(1997) Comas** Series 6 Mod. C155 Plastic Tube Filler. S/N 619

**Weight Mgt.** Mod. LT-05-1818-3V489, 500 Lb. Cap. S/N 44484

**(1996) Kalish** Mod. K2-1150 Filler. S/N 0215

**ELF** Liquid Filling Line

**Rationator** Phantom Capper. S/N 12111

**Swanmatic** Capper w/Russel 25070 Cap Feeder.

6-Head Piston Filler.

**Holmatic** Single-Piston Fillers.

**(2) Ron Unger** Mod. 200 & Mod. 1200 Piston Fillers. S/N's 018761, N/A

Cream Filler.

Auger Filler.



Holmatic Piston Filler

### WEBCAST BIDDER INSTRUCTIONS

All Internet Bidders Must Register For This Auction At [www.bidspotter.com](http://www.bidspotter.com) At Least 48 Hours Prior To The Sale Date. ***If You Do Not, You Will Not Be Approved.***

There Is A 15% Buyers' Premium In Effect For All Online Purchases.

We Highly Recommend That Potential Buyers Attend This Auction & Bid Live Onsite. This Will Give You The Ability To Inspect The Items & Fully Appreciate Their Condition Along With Saving You 3% Of The Buyers' Premium.

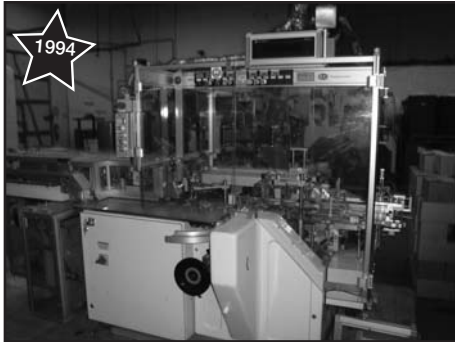
***No Last Minute Registrations Will Be Accepted. Make Sure To Register No Later Than 48 Hours Prior To The Start of The Auction.***

**PUBLIC AUCTION THURSDAY, APRIL 22, 10:30AM**



# LABELING / PACKAGING/TANKS & PUMPS

## LABELING / PACKAGING



(1994) **Cam Packaging Line** Mod. PRX Cartoner. S/N C-13762PAX21.

(2) **Videojet** Excel 10 Coders.

(2) **Accraply** Front Labelers; **Domino** Series A Video Jet. S/N G-770.

(1991) **Generic Jewel** Labeler S/N 6151; **Precision** Mod. PPSLM Labeler S/N 538K85; **Tharo** Mod. PA1200 Labeler; **Labelaire** Labeler; **Lablejet** Labeler; **S&R** Mod. SR5000 Case Taper.

Visit our Website: [www.tauberaronsinc.com](http://www.tauberaronsinc.com)

Cam PRX Cartoner

## TANKS & PUMPS

(1998) **Winkworth** Mod. PV-120 Tri-Motion Pressure Jacketed, 120 Lt. SS Tank w/Side Sweep, Agitator. S/N 16247-T19

2000 Gal. SS Jacketed Holding Tank, Side Sweep w/Twin-Propeller Drive. S/N T7

1200 Gal. SS Jacketed Holding Tank, Sweep Agitation, Lightnin Mixer. S/N T5

170 Gal SS Jacketed Holding Tank, Side Sweep. S/N T13

350 Gal. SS Jacketed Holding Tank Side Sweep with Lightnin Agitator. S/N T-11

250 Gal. Mod. 250D9MT, Sweep Jacketed Kettle, 2hp Drive, 90psi, 332°F. S/N A-6280-A

50 Gal. SS Jacketed Tank. S/N T15

5000 Gal. SS Holding Tank. S/N T1

2000 Gal. SS Holding Tank w/Side Agitator, Side Hole. S/N T9

(2) 2000 Gal. SS Holding Tanks. S/N's T2, T8

(2) 1500 Gal. SS Holding Tanks. S/N's T3, T4

(2) 1000 Gal. SS Holding Tanks. S/N's T6, T10

500 Gal. SS Holding Tank; 250 Gal. SS Holding Tank S/N T12; (5) 100 Gal. SS Holding Tanks; 100 Gal. SS Pressure Jacketed Tank; 50 Gal. SS Holding Tank S/N T14; 15 Gal. SS Holding Pots (2 Jacketed); 30 Gal. SS Tank.

(2001) **Braun & Lubbe** Auto Blend 100, Mod. N-C32KA31, 7 1/2 hp Dual-Station Metering Pump, Skid Mtd. S/N A22081

**Lightnin** Mod. EV5P50W SS Mixer, Air Operated; **Dayton** 3hp Mixer; **Wakesha** Mod. 060, 5hp In Line SS Homogenizer; **Groen** Mod. B-20, 20 Gal. SS Mixing Bowl; **Greenco** In Line Homogenizer; (11) (2007-2009) 2" Sandpiper Pumps; (2) **Aro** 1 1/2 Air Driven Pumps; (2) 5hp SS Pumps; **APV Puma** Pump; **Super Flow** Pump; **Tri Flow** Pump.



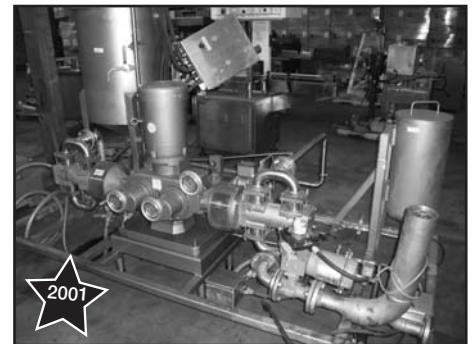
View of Jacketed Tanks



Winkworth 120 Lt. Pressure Jacketed



1500 Gal. SS Holding Tanks



Braun & Lubbe Metering Pump



5000 Gal. SS Holding Tank

**INSPECTION: Wednesday, April 21, 9 to 4 & Morning of Sale.**

# LAB EQUIP./AIR COMPRESSORS/GENERATORS & CHILLERS/ROLLING STOCK/MISC. EQUIP.

## LAB EQUIP.

**Fisher Scientific** Oven; **Leica** Mod. Mark II Plus, ABBA Refractometer; **(2)** **Dell** PC Monitors; **HP** Officejet 6310 Printer/Fax; **(2)** **Brookfield** Mod. DV-I Viscometers; **(3)** **Heidolph** Mixers; **Hanna** Dig. Scale; **Mettler** PM480 Dig. Scale; **Elma** Ultrasonic LC30H Ultrasonic Cleaner; **Mettler Toledo** Mod. HG-53 Halogen Moisture Analyzer; **American** Mod. IC-42 Incubator; **Despatch** 370°C Oven; **New Brunswick** Scientific Mod. C24 Incubator; **VWR** Mod. 2005 Low Temp. Incubator.

## AIR COMPRESSORS

**Gardner Denver**  
30hp Rotary Screw  
Air Compressor  
w/Dryer.

**IR** 25hp Tank Mtd.  
Air Compressor  
w/Dryer.



Gardner Denver 30hp Rotary Screw Air Compressor

## GENERATORS & CHILLERS



Electro Steam Generator

**(2006)** **Electro Steam** Mod. LB120,  
120kw Steam Generator w/Heater.  
S/N 37895

**(2)** **(1996)** **Trane** Mod.  
CGAEC30YABA/WH Chillers.  
S/N's J96F82010, J96F8204

**Berg** Mod. PA-5 Chiller.  
S/N A3994-0796

**Aquatemp** 50 Ton Chiller.

**Evapco** Mod. LSCA80 Tower Coil.  
S/N 947402W



(2) Trane Chillers

## ROLLING STOCK

**Clark** Mod. EC500,  
3000 Lb. Elec.  
Forklift w/Battery  
Charger.  
S/N E355394

**Clark** Mod. ER2TT,  
2000 Lb. Stand Up  
Elec. Forklift  
w/Battery Charger.

**Raymond** Mod.  
20R30TT, 3000 Lb.  
Elec. Forklift  
w/Battery Charger. S/N 20842258

**Yale** Mod. NRO35AANM36SE101, 3500 Lb.  
Stand Up Elec. Forklift. S/N 498386

**Clark** Mod. TMSS15, 2000 Lb. Elec.  
Forklift.

**Tennant** Nixgen Floor Scrubber.

**Lift Rite** 1500 Lb. Elec. Lift, 6' Max.



Clark EC500, 3000 Lb.  
Elec. Forklift

## MISC. EQUIP.

**(3)** **Hoopman** FT30 Cap & Plug  
Feeders.

**Comas** Lazy Susan

**Comas** SS Cap Elevator

**(2)** **ELF** 10' Sects. SS Plastic Table  
Top Conveyor.

**(150)** Metal Enclosed Plastic Totes.

**Yamato/Barkley** Mod.  
CK02L/40/CE301, 300/min.  
Checkweigher S/N BD897-1; **Icore**  
Checkweigher; 12"x20" Cooling  
Tunnel w/(2) 6500 BTU Coolers;  
Shrink Tunnel, 18"x11" Aperature;  
**Syntron** Cap Feeder; **Transcell**  
Digital Floor Scale; **(2)** **Weightronix**  
Digital Scales; Hyd. Pallet Jack.

Qty. of SS Piping &

Qty. of Bulk Lotion



View of Totes



6-Head Piston Filler

**INSPECTION: Wednesday, April 21, 9 to 4 & Morning of Sale.**



# PUBLIC AUCTION

By Order of Board of Directors

## "COSMETIC MFG. & PACKAGING"

*FEATURING: Filling Lines – Labeling & Packaging – SS Tanks*

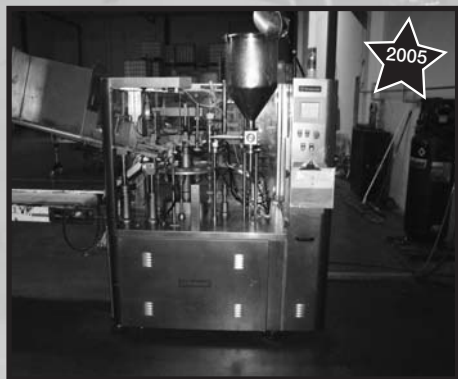
(Closing Mfg. Operations)

**CREATIVE SOLUTIONS COSMETICS  
LABORATORIES & MFG. INC.**

**10955 Arrow Rte. #103  
Rancho Cucamonga, CA**

**DIRECTIONS:**

From Downtown LA, Take The San Bernardino Fwy. (10) East Past The Ontario Airport to The Haven Ave. Offramp, North on Haven (From The 210, South on Haven) To Arrow Rte., East on Arrow Rte. to Sale Site!!!



Vanguard VF100TA H.S. Tube Filler



View of Jacketed Tanks

**THURSDAY, APRIL 22, STARTING AT 10:30 AM**

**INSPECTION: Wednesday, April 21, 9AM to 4PM & Morning of the Sale.**