

3-DAY ONLINE-ONLY AUCTION

September 17-19 • Bidding Begins Closing Daily at 8am PT

MASSIVE GROWER, PACKAGER, & SHIPPER OF BOUQUET BULB FLOWERS & SEASONAL FIELD CROPS

BULB PLANTING & BUNCHING LINES
FARM TRACTORS • FORKLIFTS
PLANT UTILITIES



LOCATIONS

3160 Upper Bay Road, Arcata, CA
3132 E. Pleasant Valley Road, Oxnard, CA
3990 & 4052 Dodge Road, Oxnard, CA

INSPECTION: 9am-4pm PT Daily
Sept. 10-16 in Arcata / Sept. 16 in Oxnard



••• **ADDED EQUIPMENT** •••
COMPLETE REMEDIATION SCREENING PLANT
used in the lumber industry to separate bark
into fines for flower growing and potting soil.
Located in Korbel, CA

For more information

Darrell 831-245-8106
Steve 323-697-8100

888-648-2249
tauberaronsinc.com

TA **TAUBER-ARONS, INC.**
Industrial Auctioneers & Liquidators since 1892

ONLINE-ONLY AUCTION

September 17 & 18 • Bidding Begins Closing Daily at 8am PT

3160 Upper Bay Road, Arcata, CA



2014 BUNCHING LINE #7

(2) Bercomex Mod. CRM Binders

2006 Potveer 16'W x 10'L Incline Power Belt Conveyor (Asset #5), S/N 3924

2014 Potveer 30'W x 10'L Power Belt Conveyor, S/N 16668-LA

2014 Potveer Debulbing Machine, S/N 16668-2C

2014 Potveer 18'W x 10'L Incline Power Belt Conveyor

2014 Potveer Mod. Havatec Trimmer System, (2) Binding Heads, w/Computer & Touch Screen Controls

2014 Potveer Mod. Havatec Buncher, S/N 16668-4C), w/(2) Binding Heads, w/Computer & Touch Screen Controls

(2) 2000 Bercomex Mod. CRM Binders

2014 Potveer 24'W x 10'L Power Belt Conveyor, S/N 16668-9b

2014 Potveer Laser Alignment System

2014 Potveer Power Belt Conveyor, S/N 16668-2A

2014



Bulb Packaging Line/Water Tulip Line

2014 BERCOMEX/FURORA BUNCHING LINE #1

Bercomex Mod. ONB 10 Debulbing Machine, S/N 06007104-001-02

2003 Van De Berg Mod. CRM-FR-1T Binder

2004 Van De Berg Mod. CRM FR-TX Binder, S/N 04009926-001-03

2014 Bercomex Mod. Furora Compact Buncher, 18,000 Stems/Hr Max. Cap., Carousel Type Overhead Conveyor, (6) Bunching Stations, with Touch Screen Controls

(2) 2014 Bercomex Mod. NB12+1000 Debulbing Machines, S/Ns 14003144-030 and 14003144-040

(4) Bercomex Mod. VZB 30'W x 81" Power Belt Conveyors

(2) 2014 Bercomex Mod. FR-EX Binders, S/Ns 140031441-120-02 and 140031441-120-01 3,600 Bunches/Hr.

2014 Bercomex Mod. BB-SL5-DD Buncher, S/N 14003144-200

(2) 2014 Bercomex Mod. CRM FL-GX Binders, S/Ns 140031442202 and 1440031442201

2007 Hantha Model AK-1 Box Dump Hopper w/36"x10' and 18"x7' Incline Conveyors, 5' x 5' x 3' Dump Hopper, S/N 2007079), w/BTM Spanning Machine, w/Vitech 18" x 10' ConveyORIZED Wash Line

2014



Views of Bercomex / Furora Bunching Line

ONLINE-ONLY AUCTION

September 17 & 18 • Bidding Begins Closing Daily at 8am PT

3160 Upper Bay Road, Arcata, CA



2014 BUNCHING LINE #9

- 2003 Potveer Mod. VAB, 16"W x 10'L Incline Power Belt Conveyor, S/N 03843
- 2014 Potveer Debulbing Machine, S/N 166668-2B
- 2014 Potveer Mod. Havatec Buncher, S/N 16668-4A, (2) Binding Heads, w/ Computer and Touch Screen Controls
- 2014 Potveer 24"W x 10'L Power Belt Conveyor, S/N 16668-9C
- 2014 Potveer 18"W x 10'L Incline Power Belt Conveyor
- 2014 Bercomex Laser Alignment System
- 2002 Van De Berg Mod. FR-T Binder, S/N 02005400-001-01
- 2004 Van De Berg Mod. FR-TX Binder

(3) 2008-2014 HAVATEC/POTVEER BUNCHING LINES #2, 3 & 4

- Potveer De-Bulbers, S/N's 13538-1, 2012 Line #2, 4651-8
- 2008 Line #3, S/N 16668-22
- 2014 Line #4
- (3) 2014 Havatec/Potveer Mod. QBB, X-Ray Sorters, S/N T14798, T14799 & T14797
- (3) Havatec Mod. T13000, De-Leafer/Counters, S/Ns 61606, 61607 & 61605

BID ONLINE AT: **BidSpotter**

2012/2013 FURORA/BERCOMEX BUNCHING LINE

- 2012 Bercomex Mod. ONB12-1, 1000 Debulber, w/Offeed, S/N 12003636-110;
- 2013 De-Leafer Mod. V2B-F, 2' x 10' Rubber Belt Feed Incline Conveyor, S/N 12007157-015
- 2012 Rotator Mod. FU-V, Single Line X-Ray, Counter, Buncher, S/N 12007157-097; 2' x 30" Offeed Conveyor, w/Buncher

(2) 2016 HAVATEC BUNCH LINES #6 & 7

- (2) 2016 Havatec Mod. T16659m Flower Debulbers, w/Sizer & Rotator, S/Ns 129913 & 129914, w/(2) Havatec Mod. Tulipstatic, X-Rays, S/Ns T19922 and T19923 and Van De Berg Mod. CRM, Flower Binders

BERCOMEX LINE #8 MANUAL BUNCHER

- 2006 Bercomex Mod. ONB10, De-Bulber, S/N 06001104-001-02

(7) 2000-2006 POTVEER MANUAL BUNCHING LINES

- (7) Potveer 2' x 40' Rubber Belt Feed Conveyors, w/Cleat For Flowers
- (7) Potveer 4' x 10' Belt Feed Conveyors
- (7) Van Be Berg Mod. CRM, Flower Binders
- (2) Potveer 5' x 40' Conveyors, w/Flower Cleats



2016

2 Available



Views of Havatec Bunching Lines #6 and 7

MANUAL BUNCHING LINE

- 1999 BTM Mod. T4100, De-Bulber, S/N 1381
- Van De Berg Mod. CRM, Flower Binder
- 2017 Havatec Mod. DBQB-JR, Rotator, S/N T222586

2003 POTVEER PLANTING LINE

- (2) Potveer 9' x 16"W x 6'D Dump Hopper; Miedema Mod. G600, 20"W x 20'L Incline Power Belt Conveyor, S/N 991151, w/Power Lift
- 9'L x 8"W x 4'D Dump Hopper
- 24" x 75' V-Trough Type Power Belt Conveyor

CRATE DUMPING LINE

- 1999 Limex Mod. T1800S Crate Washer, S/N 1133; 12" x 28" Parts Opening, w/24" x 10' Pre-Wash Section
- 20' x 5' x 5' Steam Injection Warming Box, w/Screw Infeed & Discharge Conveyors
- (2) Vibratory Screens, Mounted on 20'H Steel Supports each with V-Trough Discharge Belt Conveyor & Screw Feed Conveyor
- 60' V-Trough Stacking Belt Conveyor
- Dual-Station Crate Emptying Flip Arm (Asset #2185), w/Crate Scrape Function and Controls
- Vi Tech Cold Wash Machine (Asset #2182)

2003 POTVEER PLANTING LINE

(2) **Potveer** 9' x 16"W x 6'D Dump Hopper; **Miedema** Mod. G600, 20"W x 20'L Incline Power Bely Conveyor, S/N 991151, w/Power Lift
9'L x 8"W x 4'D Dump Hopper
24" x 75' V-Trough Type Power Belt Conveyor
Potveer 4' x 41" x 3'D Hopper, w/36"W x 41" Power Belt Conveyor
(2) Water Spray Down Positions & 26"W x 251" Gravity Roller Conveyor
(2) **Potveer** PGB, 4"W x 41" x 3'D Compost Hopper, w/(GDE) Compost Measuring Unit, (2) Position Water Flow Down Stations and 36"W x 151" Gravity Roller Conveyor
(3) **Potveer** Mod. PGB, 6'L x 48"W x 48"D, Compost Hopper, w/Mod. GDE 32" x 60" Compost Measuring Unit, S/N 03058
Potveer Case Stacker, w/Overhead Pick and Place Position, Pallet Infeed Position, 48"W x 201" Power Belt Conveyor and Controls
Potveer Dump Hopper and Complete Conveyor Systems

BUNCHING LINE #1

Bercomex Debulbing Machine
Potveer 16"W x 101" Inclined Power Belt Conveyor, **2006 Potveer** 21"W x 20'L Bunching Power Belt Conveyor, S/N 3925C
2006 Potveer 21"W x 20'L Bunching Power Belt Conveyor, S/N 3925C

BUNCHING LINE #2

1998 Potveer Mod. OBM Debulbing Machine, S/N 96657
2007 Potveer 16"W x 10'L Inclined Power Belt Conveyor, S/N 27422
2007 Bercomex Mod. ONB 11 Debulbing Machine, S/N 07007775-001-01
2008 Bercomex Mod. CRM FR-T1 Binder, S/N 08008786-001-03

BUNCHING LINE #3

2000 Van De Berg Mod CRM FR-T Binder, S/N 20001031-02
Potveer 20"W x 12'L Power Belt Conveyor
Van Be Berg Mod. 538FRT Binder, S/N 710872
1999 Potveer Mod. SPB 99039 Bunching Power Belt Conveyor

BUNCHING LINE #4

2008 Bercomex Mod, CRM FR-T Binder, S/N 06008786-001-02
Van De Berg Debulbing Machine, w/Feed-Through Power Belt Conveyor

BUNCHING LINE #5

(2) **Potveer** Debulbing Machines
24"W x 101" Gravity Roller Conveyor
2001 Van De Berg Mod. CRM FR-T Binder, S/N 01005414-001-02
(2) **2004 Van De Berg** Mod. CRM FR-TX Binders, S/Ns 04009926-001-02 & 04009926-001-01, w/**Potveer** Bunching Power Belt Conveyor

BUNCHING LINE #10

Stem Cutter, w/Overhead Hold-Down
Compass 22"W x 10'L Incline Power Belt Conveyor
Van De Berg 31-Position Bunch Binding Machine
2004 Van De Berg Mod. CRM FR-TX1 Binder, S/N 04012280-001-06
Van De Berg Mod. FRT 1176 Binder, S/N 90036501
Potveer 24"W x 35'K Bunching Power Belt Conveyor

BUNCHING LINE #11

(2) **2004 Van De Berg** CRM FR-TX Binders, S/Ns 04009924-001-01 & 04012280-003-04
2005 Bercomex Mod. CRM FT-TX Binder, S/N 05009370-001-08
Potveer Debulbing Machine, w/30"W x 12'L Feed-Through Power Belt Conveyor
Potveer 43-Position Bunch Binding Machine
Potveer Mod. KPU Stem Cutter, S/N 01001
(2) **2003 Van De Berg** Mod. CRMFR-TX Binder, S/N 03007611-001-04
(2) **Potveer** 32"W x 10'L Power Belt Conveyors

MANUAL BUNCHING LINES

(3) **Bercomex** 24"W x 25'L Power Belt Conveyors
(8) **Bercomex** Buncher/Binders, w/(2) **Potveer** Binders, Computer and Touch Screen Controls
Potveer TI-11473 Trimmer System, w/Buncher & Binding Heads, S/N 62221X
2018 Akerboom Bulb Shower, w/Steel Enclosure, 2-Pallet Width, w/Double-Door Access, S/N 18-03
2002 Limex Mod. T1500E Crate Washer, S/N 1313
2006 SWF Model TF-800V Tray Former, S/N 050680-01, w/Infeed Gravity Roller Conveyor; **Nordson** Mod. ProBlue 10 Gluer and **Nordson** Model Eclipse Senes EPC30 Pattern Control System
Lot of Conveyor Transfer System, to Include: Estimated 24"W x 300'L Power Roller Conveyor, Estimated 24"W x 851 Roller Conveyor, Power Belt Transfer Conveyor, 45' Angle Turn Gravity Heat Rollers; and Power Belt Transfer Conveyors Misc. Hytrol Conveyor Throughout Warehouse
(9) **2008 Terra** Box Robot De-Stacking Robots

2018



Akerboom Bulb Shower, w/Steel Enclosure

COMPASS PLANTING LINE

Compass 12'L x 9'W x 4'D Hopper, w/Power Belt Conveyors
2007 Potveer Compost Hopper, S/N 1235-4, w/32" x 60" Compost Measuring Unit, S/N 1235-5
(2) 2006 Potveer 4'H x 3'W x 4'L Compost Hoppers, w/Compost Measuring Unit and 48"W x 51" Roller Conveyor
Schouter Bulb Loading Hopper, w/18"W x 71" Inclined Power Belt Conveyor
Limex Steam Sterilizer, 2-Lane, w/24" x 30" Parts Opening
Potveer Roller
Potveer Dumper, w/(2) 24"W Roller Conveyor Sections & Overhead Placement Arm
(2) Antha Mod. ALBV20 Planters

STRAPPING MACHINES

(5) Dynatec Mod. DF-30 Strapping Machines
(3) 2017 Samuel P-650 Strapper
(2) Samuel Mod. EXS-201 Strapping Machines
(2) Signode Mod. Sure Tyer Strapping Machines
(5) Strapex Mod. S-315Y Strapping Machines
(5) Belcor Mod. BEL 150 Box Tapers; **2013 Polychem** Mod. PCI000 Strapping Machine, S/N 21186; **(2) Strapak** Strapping Machines; **2012 Mosca** Mod. RO-M-P5 Strapping Machine, S/N 102532

ASTER FLOWER PROCESSING/PACKAGING LINE

Van De Berg 33'W x 451 Bunching Power Belt Conveyor
(2) Bercomex Mod. CRM FR-TX Binders, S/N 05009370-001

PROFLOWER PROCESSING/PACKAGING LINE

Wexxar Mod. BEL, 507 Case Erector, S/N 130853
Wexxar Mod. BEL, 150 Box Taper

HOOP GREENHOUSES

Hoop Greenhouses: **(51)** 24W x 150'L to 200'L & **(438)** 24W x 300'L, Including Hoops, Coverings and Associated Hardware
(2,500,000) Plastic Planting Crate Containers
(2,000) Dutch 3-Tier Flower Carts

FLOWER PROCESSING/PACKAGING LINE

(4) Bercomex Mod. CRM Binders
(2014) Barry-Wehmiller Model TF-800VB Tray Former, S/N TF800VB103, 8"H x 16"W x 40"L Maximum Capacity, with **Allen-Bradley** Model Panel View Plus 400 PLC Control; **Nordson** Model Problue 10 Gluer and Metal Inspection Stand
Van De Berg Planter, 2-Lane, w/Dual 11-Position Drills & Bulb Hopper
(185) Aluminum, 2-Tier, 4-Wheel Carts
(623) Blue Towable 2-Tier Carts
(21) Towable 4-Wheel Field Carts, w/Plastic Covers
(28) Holland Gas-Fired Portable Heaters
Puretec Reverse Osmosis Systems, w/(2) Fiberglass Tanks, Pumps & Hydrcode Water System Tank
 Climate Control 8-Injection Pumps Automated Ferbigation Equipment Injection System, with **(5)** Poly Constructed Tanks and **(3)** Poly Champion Mod. R7F-6, 7.5HP, Air Compressor, S/N D192228
Vitech 8'L Tray Washer, w/Plastic Interlocking Belt Conveyor
PTR Baler & Compactor Mod. 3400HD Vertical Hydraulic Baler, S/N 08-3913
2018 Kobalt Mod. XC602000AJ, Vertical Tank-Mounter Air Compressor, 5HP, S/N AS36974

MOBILE EQUIPMENT – VEHICLES & TRAILERS

(2) 2012 TJ 5000 Yard Goats
Ottawa YT30 Propane Yard Goat
Commando YT50 Yard Goat
2005 Forest River 20' Shower Trailer
(9) Peterbilt, Kenworth, Freightliner and **International** Dump Trucks
(2) International 2000 Gal. Water Trucks
Toyota / Chevy Pick-Up and Service Trucks; Curtain Trailers; Flatbed Trailers
(2) CAT 980B Articulated Wheel Loaders, w/10' Buckets
Hitachi EX120-3 Hyd Excavator
Komatsu WA320 Loader; **Bobcat** 763 Skid Steer
(2) Bobcat S650 Skid Steers
Komatsu D41 Crawler

BID ONLINE AT: **BidSpotter**



Peterbilt Dump Truck



Ford F-650 Flatbed Trucks



Nu-Van 53' Curtain Trailer



Forest River 20' Shower Trailer



Komatsu Loader with 8' Bucket



Bobcat Skid Steer Loader with 6' Bucket

FARM TRACTORS & TRAILERS

(4) Massey Ferguson 1125, 135, 1260, 1533
 (13) Kubota M5-091, (2) M8540D, M7060HD12, (2) L5240, L4220, L4240DT, (2) 7420, L245DT, (2) L3301DT
 (7) John Deere 5500, 790, 6200, 5320n, 4430, 6230, 5310N
 CAT DD25
 (2) Yarmar 1500HD
 (2) GK TR2 Spray
 Gearmore Rototiller
 Howard Ripper/Tiller
 Danby 10' Scraper Attachment

Hutch Master Disc
 8' Box Scraper
 2500 Gal. Diesel Reservoir
 (22) 48-53' Flatbed Trailers
 (10) 20' Flatbed Trailers
 40' Storage Trailer
 5' Mower Attachment
 Haulmark Storage Trailer
 (2) Imants Reusel Mod. 45SC150R,
 Spade Attachments

(2) Matthew Mowers
 (3) 200 Gal. Pesticide Trailers
 LMC Mod. 8204, Plow
 (29) EX-GO XI640, 3-Wheel Electric Yard Carts
 Yamaha YDRAX3, Gas
 Tenco Electric Yard Carts
 Honda ATV
 (4) Tenant and Advanced Floor Scrubbers/Sweepers



Kubota L3301DT Tractor



Kubota 5240 Tractor



John Deere 6230, 4WD Tractor



John Deere 7420, 4WD Tractor



John Deere 5310N Tractor



Yanmar YM1500 Tractor



EZ GO 3-Wheel Electric Cart

FORKLIFTS/MANLIFTS

- Manitou MH25-4T, 5,000 Lb. Capacity Diesel
- (6) Hyster E50XN, 5,000 Lb. Capacity Electric
- (9) Hyster J40XN, 4,000 Lb. Capacity Electric
- (3) Hyster H60FT, 6,000 Lb. Capacity Diesel
- (6) Hyster H50FT, 5,000 Lb. Capacity Diesel
- Clark S25D, 5,000 Lb. Capacity Diesel
- (2) Clark ECX25, 5,000 Lb. Capacity Electric
- (2) CAT GC30K
- (5) Toyota 7FGU25/U30, 5,000 Lb. Capacity Propane
- (2) Wiggins and Champ Diesel
- CAT 2P 5,000 Lb. Capacity Propane
- (2) Skyjack 3219
- 6832 Scissor Lifts
- (3) Genie 2-60/34, 60' Aerial; GS 2646; SL20 Scissor Lifts



View of Forklifts

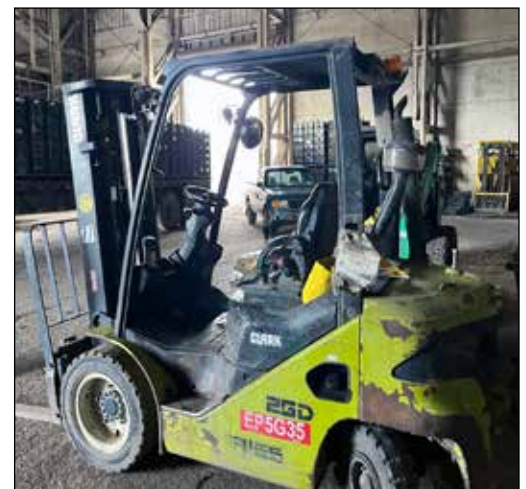


Hyster E50XN, 5,000 Lb. Capacity Electric Forklifts



Genie Mod. 2-60/34, 60' Aerial Manlift

BID ONLINE AT: **BidSpotter**



Clark S25D, 5,000 Lb. Capacity Diesel Forklift

(2) WELL & IRRIGATION LINES

250bbl Well Water Poly Storage Tank; (2) Approx. 300-Gal Steel Storage Tanks, Assets #A & B; Water Softening System, Skid-Mounted, w/Meters Controls and Component Injection; Acid Injection Mixing Tank, w/Paddle Mixer, Approx. 1,000-bbl Water Storage Tank, Pump Skid, Skid-Mounted, w/(3) 10HP Centrifugal Pumps

ONLINE-ONLY AUCTION

September 17 & 18 • Bidding Begins Closing Daily at 8am PT

3160 Upper Bay Road, Arcata, CA



MASSIVE GROWER, PACKAGER, & SHIPPER OF BOUQUET BULB FLOWERS & SEASONAL FIELD CROPS

AGRICULTURAL EQUIPMENT

Gearmore Mod. 350HD, 350-LB Spreader, S/N L02750W587674

Massey Ferguson Sickle Bar Mower, S/N 238041567

2007 Rears Mod. Pak-Flail Mower, S/N E07-192

Ford Mod. 22-50, Mower, S/N 2256; 5-Tine Cultivator

John Deere Mod. 975 Reversible Plow, S/N P00975X004793

Gonzalez Rototiller; 114" Blade Leveler

Athens Mod. 106, 2-Row Pull-Type Disc Harrow, S/N 176356. Each Arm 8W; 6-Disc x 8W Disc Harrow

New Holland Mod. 213 Manure Spreader, S/N 544398

Audros Hose Uncoiler, S/N 050726

Athens Mod. 47, 2-Row Lift-Type Disc Harrow, Est. 8W Cap., Each Arm, w/(10) Discs

1997 Del Morino Mod. SC-26, Mower, S/N 257

500-Gallon Diesel Fuel Storage Carbon Steel Tank, w/Pump

The Shade Station Single-Axle Picnic Trailer, Est. 20' x 12' Shade Area

Rears Mod. Pak-Tank 105-Gallon Fertilizer Sprayer

Snyder-Crown 300-Gallon Polyurethane Tank

Rears Estimated 50-Gal. Portable Fertilizer Sprayer

Botman Bulb Harvester, w/**Honda** GX390 Gas Engine

Rhino Mod. SHV90, 90" Rototiller

1998 Inants Mod. 45SC150R, 3-Blade Rotary Spader, S/N 16941

General Mod. MLR72, 72" Rock Rake

FALC 64" Rototiller

Rhino Mod. SM61, 60" Rototiller, S/N 10196

Eversman Mod. 3212, 8W Leveler

Brillion Multipacker, 2-Row, 128"W

Gannon Mfg. Co 7' Box Blade, S/N HD-4284HH-11

9' Blade Leveler

(2) 3-Tine Cultivator

Harrell Mod. 8203 Bottom Plow

7-Tine Cultivator, 80"W

John Deere Mod. 225 Disc Harrow, S/N P00225X017104

Drimac Planter, w>Loading Hopper

Rhino 84"W Mower

Breezand Mod. 02232-2772 Planter

Greenland Mod. PS604-754, 1.400-Lb Spreaders

Buckeye Planter, w/Landscape Fabric Dispensing Position and Water Hose Laying Position

Maschio 2-Blade Crop Tiller, w/**John Deere** Water Tank

CTI 118"W Plow, w/(2) Plow Heads and (2) Disc Harrows

Wasco Plow, w/(2) Plow Heads and (2) Disc Harrows

Maschio Mod. K 3-Blade Crop Tiller, 76"W

Matthews Company Mod. 72-FP Flail Mower, S/N 55584

Howard Rototiller, Asset #4T

2002 Rijnbeek ZR115 Bulb Harvester, S/N 020031, w/**Honda** GX390 Gas Engine

2002 Van De Berg Mod. PWE LE Planter, S/N 02004116-001

(2) **CIMA** Mod. P55S Track Type Sprayers

(2) **Rear** Mod. Pul-Tank 600-Gallon Portable Sprayer, w/Pump

(2) **Troy-Bilt** Mod. Horse Rototiller, 10HP Each, w/**Briggs & Stratton** Engine

Melrose Mod. Spra-Coupe 230 Sprayer, w/**Rite-Way** Mod. SC-525 Turbo Track

Sprayer Arm & 200-Gallon Poly Storage Tank

2003 Thomas Mod. Proscreen 400 Type B105/PS400 Screening Plant,

S/N P4000309, Asset #22T, Trailer-Mounted

Weller Mod, **Jubilee** RP220 Round Baler



View of Agricultural Equipment



Commando YT-50 Yard Goat

PLANT UTILITIES

1996 Hurst Series 100 Package Boiler, 100hp Skid-Mounted, S/N S1000-30-11
 1996 Hurst Series 100 Package Boiler, 100hp Skid-Mounted, S/N S1000-3Q-12
 1999 Hurst Series 200 Package Boiler, 200hp Skid-Mounted, S/N S2000-30-3
 2015 Champion 10015S, 9,000-Watt Dual Fuel Generator, S/N 15MAR1300304
MQ Power DCA-70SSJU4I, 70-KVA Port. Generator, Hours: 6,439, S/N 7305480
Rogers Mod. MV Series Rotary Screw Air Compressor, w/Dryer & Receiver
Quincy Mod. F-15V, 15HP Rotary Screw Air Compressor, S/N 1006515478
Onan Generator, Asset #2, **Cummins** Diesel Engine, w/Power Command Control and Custom Tank Technology Coolant Tank
Onan Generator, Asset #3, **Cummins** Diesel Engine, w/Power Command Control
Onan Generator, Asset #2685, **Cummins** Diesel Engine, w/Model Power

Command Control
 Horizontal Propane Tank, S/N 113812, w/**Ransome** Vaporizer
2005 MQ Power Mod. Whisperwatt DCA-25SSIU, 25 KVA Diesel Generator, Trailer-Mounted, S/N 7105454
Whisper Watt mod. DCA-25SSIU2, Generator, S/N 3775800
Onan Mod. DFRH-5002064, 400-KW Generator, S/N J010298902, Asset #5,
Cummins Diesel Engine, w/Power Command Control
Onan Mod. 4000FCE Generator, S/N K980820087, **Cummins** Diesel Engine, w/Power Command Control
 1,000-Gal. Off-Road Diesel Horizontal Carbon Steel Tank, w/Pump
Raypak Boilers; **Holland** Heaters



Onan Mod. DFRH-5002064 400-KW Generator

ONLINE-ONLY AUCTION

September 19 • Bidding Begins Closing at 8am PT

3132 E. Pleasant Valley Road, Oxnard, CA • 3990 & 4052 Dodge Road, Oxnard, CA



ORIENTAL FLOWER PROCESSING/PACKAGING LINE

(2) **Van De Berg** Mod. FRT-832 Binders; Upright Packaging Line

ASIATICS FLOWER PROCESSING/PACKAGING LINE

Van De Berg 33"W x 45'L Bunching Power Belt Conveyor

(3) **Bercomex** Mod. CRM Binders; 23"W x 10'L Power Belt Conveyor

SOIL STEAM STERILIZING LINE

2014 Shredder, 25HP, Platform Mounted, w/Cross-Over Conveyor & Stairs

2014 **Potveer** Steam Box, w/48"W x 20'L Power Belt Conveyor

Vitech 8'L Tray Washer, w/Plastic Interlocking Belt Conveyor

(2) Soil Dispensing Hoppers, 88"L x 36"W x 24"D., w/36"W x 7'L Power Belt Conveyors and Controls

SOIL STEAM STERILIZING LINE

2014 Shredder, 25HP, Platform Mounted, w/Cross-Over Conveyor & Stairs

2014 **Potveer** Steam Box, w/48"W x 20'L Power Belt Conveyor

Vitech 8'L Tray Washer, w/Plastic Interlocking Belt Conveyor

(2) Soil Dispensing Hoppers, 88"L x 36"W x 24"D., w/36"W x 7'L Power Belt Conveyors & Controls

Water Treatment Technologies Reverse Osmosis System, w/Pump (3) **Hydracode** Units and (2) Fiberglass Tanks

Pressure-Pro Mod. E Series Pressure Washer, w/**Honda** GX390 Motor

(2) **Climate Control** 8-Injector Pumps, Automated Fertigation Equipment Injection Systems, w/(4) Poly Constructed Tanks and (3) Poly

Magliner 5W x 30' Portable Ramp

3-DAY ONLINE-ONLY AUCTION

September 17–19 • Bidding Begins Closing Daily at 8am PT

MASSIVE GROWER, PACKAGER, & SHIPPER OF BOUQUET BULB FLOWERS & SEASONAL FIELD CROPS

BULB PLANTING & BUNCHING LINES
FARM TRACTORS • FORKLIFTS
PLANT UTILITIES

DIRECTIONS

From: California Redwood Coast-Humboldt County Airport. To: 3160 Upper Bay Rd, Arcata, CA. Get on US-101 S from Airport Road. Follow US-101 S to Giuntoli Lane. Take exit 716B from US-101 S. Take Janes Road and Upper Bay Road to your destination.

TERMS OF SALE

18% Buyer's Premium for Online Bidding. Total to be paid within time specified by auctioneer in cash, cashier's check, or wired funds before removal of purchase. All purchases must be removed within period announced by auctioneer. All descriptions are believed to be correct, but no guarantees or warranties are made by auctioneer as to nomenclature or age. Everything sold on an "as is" basis. ALL SALES WILL BE SUBJECT TO LOCAL AND STATE SALES TAX. A BUYERS' PREMIUM WILL BE COLLECTED ON ALL PURCHASES.

CHECKOUT

Monday, September 23 thru Friday, October 4, 8am to 4pm PT. Mondays thru Saturdays Only.
(Until Friday, October 11 for the Bunching Lines).

TRANSPORTATION

Arcata is serviced by Humboldt County Airport (ACV) and the Airlines are AVELO and UNITED (Plant is 10 minutes away).

BID ONLINE

With BidSpotter.com, you can bid on items in auctions from anywhere in the world! Bid from the convenience of your home or office! Real time internet bidding & audio-No special software needed, use your browser! To register to bid in the Tauber Arons, Inc. auction, please visit us at BidSpotter.com or call (888) 648-2249. An 18% Buyer's premium for on-line sales. All out of USA buyers must supply a refundable \$1,000 deposit prior to being approved to bid.

PAYMENTS

Invoices will be sent to successful bidders immediately after the sale closes.
All bills to be paid in full the next day, Friday September 20th.

RIGGER

United Riggers – Contact Francisco 323.204.1738, UnitedRiggers1@hotmail.com

TAUBER-ARONS ONSITE CONTACTS

Carlos 323.314.1114 and Rudy 323.314.2315

All internet bidders must register for this auction at BidSpotter.com at least 48 hours prior to the sale date. If you do not, you may not be approved. Last minute registrations may or may not be accepted. Make sure to register no later than 48 hours prior to the start of the auction.