

**ONLINE ONLY AUCTION**

## LATE-MODEL BREWING & PACKAGING EQUIPMENT



900 Kennedy Blvd.,  
Somerdale, NJ 08083  
(20 minutes from PHL Airport)

**DATE: Bidding Ends**  
**Tuesday,**  
**February 13th**  
**at 10:00 A.M. ET**

**INSPECTION:**  
Monday, February 12th  
Beginning at  
9:00 A.M. ET

### HIGHLIGHTS:

- BRAUKON 50 BBL/60 HL  
3-Vessel Brew House
- MUELLER & JV  
NORTHWEST 150 BBL  
Stainless Steel Jacketed  
Bright & Fermentation  
Tanks
- Assorted SAAZ & NSI  
Stainless Steel Jacketed  
Tanks
- NSI & SAAZ Assorted  
Stainless Steel Cone  
Bottom Tanks
- GEA WESTFALIA Skid  
Mounted Clarifier –  
REBUILT 2021
- 3-Tank CIP System
- PROBREW 9-2 Configured  
Can Filler-Seamer
- COMAC 3+1T NS-CA Keg  
Cleaning & Filling Line
- SBC Masters RS 24-24-6  
Monoblock  
Bottle Filling Line
- CLIMAX Straight Line  
Drop Case Packer
- PEARSON 6-Pack Bottle  
Carrier Erector with  
Drop Case Packer
- Complete Bottle Conveyor  
System
- Material Handling  
Equipment
- Steam Boiler &  
Air Compressors
- Repair & Maintenance  
Shops
- MRO Spare Parts, Supplies,  
& Stores
- Drive-In & Walk-In  
Refrigerators & Coolers
- Complete Tap Room

In Conjunction with:

**TA** TAUBER-ARONS, INC.  
Industrial Auctioneers & Liquidators since 1892

**BID ONLINE AT BidSpotter**

# CRG AUCTION



COMAC KEG RINSING AND FILLING LINE



(SAMPLE) 50 - 150 BBL MUELLER FERMENTATION TANKS

**GREAT OPPORTUNITY TO PURCHASE  
AS A TURNKEY OPPORTUNITY IN  
A VERY DESIRABLE LOCATION**

Call Gary Katz to Discuss: 860.250.1115

**All IP Available Immediately  
by Private Treaty.  
See Page 5 for Details.**

For complete catalog

**crgllc.com 1.800.300.6852**

Auction Specialists • Appraisal Experts • Online or On-site  
1654 King Street, Enfield, Connecticut 06082  
(860) 623-9060 • (800) 300-6852 • Fax: (860) 623-9160  
Bill Firestone, President





PORTABLE PILOT BREW HOUSE



MASH TANK – INTERIOR VIEW



PROCESSING TANKS FOR PILOT BREW HOUSE

- **2012 BRAUKON 50 BBL/60 HL 3-Vessel Brew House**, with Whirlpool, AlloySius pre-mashing system, with mash kettle with GentleMix, mash/laurn tun and wort (with SmartBoil), kettles, mash, lauter and wort pumps, Siemens Simatic panel touch screen controller, water mixing stations, flow meters, spent grain pump, 3-hopper automatic dosing unit, vapor condensation unit, Whirlpool wort cooling aeration system, pumps, SS piping, valves, fittings, filters, 2011 GEA Ecoflex VT 20 CDL-C- 10 SS plate heat exchanger, s/n 170/24155, 3.0 kW pump, SS skid mounted, plate heat exchanger



MASH KETTLE/LAUTERN TUN FROM BREW HOUSE



GEA HEAT EXCHANGER SKID FOR PILOT BREW HOUSE

- **(4) MUELLER and JV NORTHWEST 150 BBL Stainless Steel Jacketed Bright Tanks**
- **(10) MUELLER and JV NORTHWEST 150 BBL Cone Bottom Stainless Steel Jacketed Fermentation Tanks**
- **SAAZ 150 BBL Stainless Steel Jacketed Hot Liquor Bright Tank**
- **NSI and SAAZ Assorted Stainless Steel Cone Bottom Tanks**
- **PALL SUPRADISC and BRAUKON Hops Guns**



(2 OF 3) MUELLER 150 BBL JACKETED BRIGHT TANKS

**ONLINE BIDDING ONLY!**

BRAUKON HOPS GUN



PALL SUPRADISC WITH 3 HP PUMP





GEA WESTFALIA CLARIFIER SKID W/PLC CONTROLS



PRO PROFORMER CO2 WATER CHILLER



COMAC KEG RINSING AND FILLING LINE



DOMINO LASER ENCODER



CLIMAX CASE PACKER

- GEA Westfalia GSC 45-06 -177 All Stainless Steel Skid Mounted Clarifier, with PLC controls, air valves, and related equipment – REBUILT 2021
- 3-Tank CIP System
- PROBREW Pro-Line 90S 9-2 Configured Can Filler-Seamer, with depalletizer, dual lane twist can conveyor, date encoder, accumulation table and conveyor system
- COMAC 3+1T NS-CA Keg Cleaning and Filling Line, with PLC controls, in-feed and out-feed conveyor, change parts for 1/4 kegs, and accessories
- SBC Masters RS 24-24-6 Monoblock Bottle Filling Line, with bottle depalletizer, encoder, automatic cap feeder, PLC controls, PLC bottle labeler
- CLIMAX Straight Line Drop Case Packer
- PEARSON 6-Pack Bottle Carrier Erector, with drop case packer
- Complete Bottle Conveyor System, with assorted accumulation tables, PLC controls, table-top and belt conveyors



PROFILL CAN 90S CAN FILLER-SEAMER



CAN DEPALLETIZER-CONVEYOR



SBC MASTER RS 24-24-6 PLC BOTTLING LINE



PLC LABELER

**DATE:** Bidding  
Ends Tuesday,  
February 13th  
at 10:00 A.M. ET

**GREAT OPPORTUNITY  
TO PURCHASE AS A  
TURNKEY OPPORTUNITY  
IN A VERY DESIRABLE LOCATION**

**ONLINE  
BIDDING ONLY!**



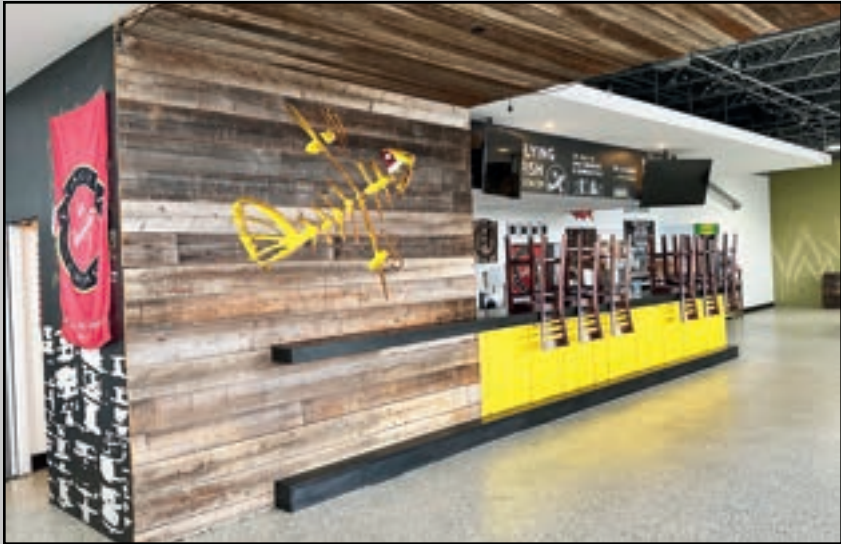


JLG SCISSOR MANLIFT



(1 OF 2) CROWN ELECTRIC FORKLIFTS

- **Material Handling Equipment**, including electric forklifts, scissor manlifts, pallet jacks, and related
- **MIURA Package Steam Boiler**, with deaeration system
- **(2) KAESER Rotary Screw Air Compressors**, with dryers
- **Repair and Maintenance Shops, Floor Scrubbers, Cleaning Systems**
- **MRO Spare Parts, Supplies, and Stores**
- **Drive-In and Walk-In Refrigerators and Coolers**
- **Complete Tap Room**, with all furnishings, beer taps, kegerators, refrigerated merchandisers, exclusive swag, and much more!



BAR IN TAP ROOM



TAP ROOM INTERIOR



TAUBER GRAIN MILL WITH SUPER SACK UNLOADER

**INSPECTION:**  
Monday, February 12th  
Beginning at 9:00 A.M. ET

**ONLINE  
BIDDING ONLY!**



MIURA LOW NOX GAS STEAM BOILER



WALK-IN COOLER - INTERIOR VIEW



(2) GRAIN SILOS



## All IP Available Including:

■ Websites ■ Recipes ■ Trade Names & Trademarks ■ Cans & Bottles ■ Labels ■ Promotional Merchandise

**Call Gary Katz for Details: 860.250.1115**



## Promotional Merchandise Includes:

■ T-Shirts ■ Jackets ■ Glasses ■ Coasters ■ Hats, Caps & Scarves ■ And More



**TERMS OF SALE:** To be sold in accordance with CRG Terms of Sale as published on our websites and in the auction catalog.

A buyer's premium will apply.

All Covid-19 safety protocols will be implemented.



**DATE:** Bidding Ends  
**Tuesday,**  
**February 13th**  
**at 10:00 A.M. ET**

**INSPECTION:** Monday, February 12th  
Beginning at 9:00 A.M. ET

**ONLINE  
BIDDING ONLY!**

For complete catalog [crgllc.com](http://crgllc.com) 1.800.300.6852