

TAUBER-ARONS INC. PUBLIC AUCTION

WED. & THURS. MAY 21 & 22 11:00 AM Each Day

"DAIRY PROCESSING – BLOW MOLDING"

**2 DAY SALE – 2 LOCATIONS
MATANUSKA MAID DAIRY**

For An
Auction Calendar
Visit Our
Website:
www.tauberaronsinc.com

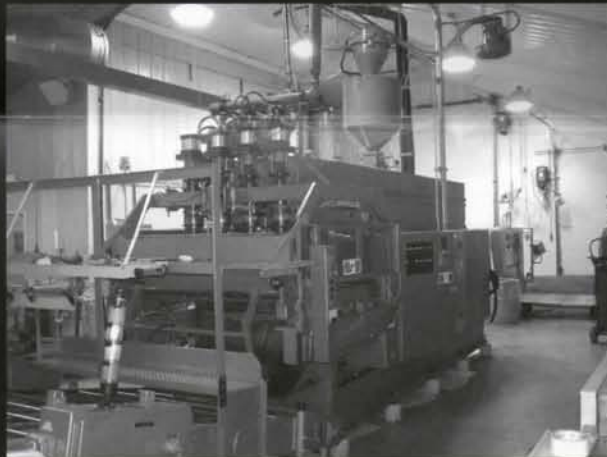
FEATURING: Blow Molders – Dairy & Water Filling – Milk & Cheese Processing - Packaging

DAY 1

DAIRY PROCESSING

**814 W. Northern Lights Bl.,
Anchorage, AK**

DIRECTIONS: From Anchorage International Airport (ANC) Take W. International Airport Rd. To Minnesota Dr. Towards Downtown, Minnesota Dr. to Benson Bl., Right On Benson Bl. To Arctic Bl., Left on Arctic to W. Northern Lights Bl., Left on W. Northern Lights Bl. To Sale Site!!!



DAY 2

BLOW MOLDING

**513 S. Valley Way,
Palmer AK**

DIRECTIONS: From Anchorage Take S. Glenn Hwy (I-A1) East to Palmer, In Palmer Turn Right On Evergreen Ave., Evergreen To S. Valley Way, Left On S. Valley Way To Sale Site!!! (1 Hour From Anchorage)

Sale Done In Conjunction With:



Phone: 415-522-5700 • Email: info@rabin.com • Web: www.rabin.com

Tauber-Arons' Alaska Business Lic. #913510

Tauber-Arons' Alaska Entity #114929

Rabin Worldwide Alaska Business Lic. #299180

BidSpotter Your portal to LIVE Auction

With Bidspotter.com, you can bid on items in auctions from anywhere in the world! Bid from the convenience of your home or office!
Real time internet bidding and audio - No special software needed, use your browser!
To register to bid in the Tauber Arons, Inc. auction, please visit us at www.bidspotter.com or call (219) 348-2437.

INSPECTION: Mon. & Tues., May 19 & 20, 9AM to 4PM

TERMS OF SALE

A deposit of 25% in cash, cashier's check, or company check is required of each bidder for deposit only. Total to be paid within time specified by auctioneer in cash, cashier's check, or wired funds before removal of purchase. All purchases must be removed within period announced by auctioneer. All descriptions are believed to be correct, but no guarantees or warranties are made by auctioneer as to nomenclature or age. Everything sold on an "as is" basis.

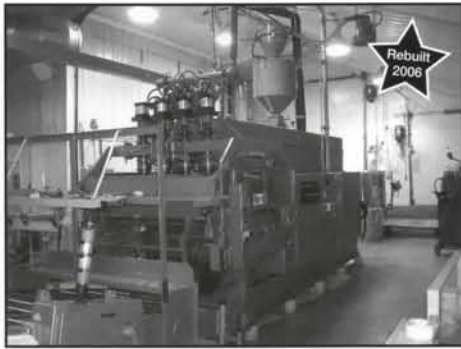
ALL SALES WILL BE SUBJECT TO LOCAL & STATE SALES TAX.

A 12% BUYERS' PREMIUM WILL BE COLLECTED ON ALL PURCHASES.

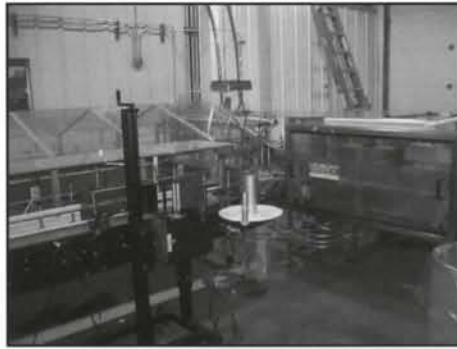
Brochure Designed & Dedicated To The Memory Of Craig F. Tucker

DAY 2 - BLOW MOLDING FACILITY

BLOW MOLDERS



Uniloy 350R2 Blow Molder



Uniloy Bagging Line



Uniloy 2016 Blow Molder

(Rebuilt 2006) Uniloy Mod. 350R2 4-Cavity Blow Molding Machine, Allen-Bradley Panel View 300 PLC Control, w/60"Wx9' Uniloy Off-Loading Conveyor, Uniloy Trimmer, M/N 10029 w/Transfer Conveyor, Auto. Inspection System Ltd. "Auto Adjust II" Inspection Unit, 10"x10"x80' Square Steel Duct To Reclaim Area, (2) Assort. Blowers & Top Mtd. Vacuum Hopper & Bin. S/N 350R2-2698

In Line w/Above Molder: Dual Set-Up Bagging Line For Bottles/Jugs Set Up To 1 Gal. Consisting of: 3'x1/4"Wx114"L Sanitary Belt Conveyor, 24"Wx24'L Sanitary Belt Conveyor/Accumulation Table, Autolabe Mod. 110RH Labeler, Unity Plastic Systems Mod. DF SS Bulk Bagger (S/N U00019).

Uniloy Mod. 2016 2-Cavity Blow Molding Machine, Extra 3-Head Attach., w/Uniloy 32"Wx9'L Off-Loading Conveyor, Uniloy Trimmer M/N 10039 w/Transfer Conveyor, Auto Inspection System Ltd. "Auto Adjust II" Inspection Unit. S/N 2016-3562

(2) (1996) Dynaplast/Tetra Pak Mod. DB30/125, 3-Cavity Dynablow Preform Stretch Blow Molders, 4-Station. S/N's 40003/2017, 40003/2015

(2) (1996) Dynaplast Mod. DB30/125, 3-Cavity Blow Molding Machines. S/N's 40003, N/A (Parts Only)

Conair 7 1/2 hp Port. Vacuum Blower; Conair 2-Color Resin Blender; (1996) Nelmor Mod. RG1012P1 15hp Granulator; (1996) Dumpers Unlimited Elec./Hyd. Gaylord Dumper;

(36) Molds - 16oz Swirly Neck Short Bottle; 1 L LP; 1 1/2 L LP; 1 L LP; 1/2 L LP, 500ml; 1 L Grip, Talking Rain, 28mm Cap, CPO; 12oz LP; 300ml Smooth Side, 28mm Cap.; 8 oz Spalding; 1/2 L LP, 500ml; Uniloy #60223, 1 Qt Juice, Long Neck, 38mm Cap.; 12 oz Opal; Edible Oil, 710ml, 28mm Cap., PCO; Lemon Juice, 710ml, 28mm Nec Cap.; 16 oz Spalding; 1 1/2 L Spalding; 1 L Smooth, 38mm Cap.; 3 L Smooth, 38mm Cap. (1 Lunger); 28 oz All Sport, 38mm Cap.; 1 L SW, 38mm Cap., 20 oz Cola, 38mm Cap (Smooth Side); 1/2 L Talking Rain; 32 oz Allsport Claw, 38mm Cap.; 20 oz Swirl; 1.5 L Talking Rain; 1/2 L Talking Rain; 2 L EZ Pour, Smooth Side, 38mm Cap.; 20 oz Swirl or Slam, 28mm Cap.; 1 1/2 L Aquafina; 1/2 L Talking Rain; Uniloy #80179 1 Gal. Square (Wetco); Uniloy #80122 1 Gal. Dairy; 1 LF; 1/2 LR (Solid & Ribbed); 1/2 LF; 1 1/2 LF.



(2) Dynaplast DB30/125 Dyna Blow Preform Stretch Blow Molder.



Dynaplast DB30/125 Blow Molder

**Blow Molding Dept. To Be Offered
In Bulk & Piece Meal Basis**

**Contemplating Selling Your Facility?
Contact Tauber-Arons For A
Confidential Consultation**

MISC. EQUIP.

Caterpillar Mod. V50D, 5000 Lb. Propane Riding Forklift, 3-Stage, Pneu. Tires, Side Shifter, 188" Max. Lift.

Crown Mod. 30RDTT, 3000 Lb. Elec. Forklift, High Mast, 3-Stage, 321" Max. Lift, Side Shifter, Charger.

Upright XL-14 Elec./Hyd. Scissor Lift, 750 Lb. Cap., Built-In Charger.

Mark Industries Lift, 750 Lb. Cap., 28"x68" Platform.

(1990) Miller Millermatic Welder; Lincoln Pro-Cut 60 Plasma Cutter; (2001) Lincoln Power MIG 255 MIG Welder; Carolina Band Saw; Delta Table Saw; Raymond Stand-Up Type Elec. Riding Forklift; Hobart 300 Amp; Foremost Mod. D12 15hp Granulator; Ridgid Mod. 535 Pipe Threader; Military Surplus 10,000 Lb. Forklift; Hastings Chiller Condenser; Crown Stand-Up Type Elec. Forklift; Palletizer; Anthony 6000 Lb. Diesel Forklift, Rough Terrain Type; Genie Super Lift Manual Lift; Chicago Mod. S-816, 8' Man. Hand Brake.

INSPECTION Mon. & Tues., May 19 & 20, 9 to 4

DAY 2 - BLOW MOLDING FACILITY

CHILLERS & AIR COMPRESSORS

(4) (1996) Conair Mod. WC1-15Q Tempco Chillers, 15 Ton Cap. S/N's 96C-006, 96C-007, 97A011, 97A012

(1997) Conair Mod. PT45011 Tempco Chilled Water Recirculation System w/5hp & 25hp Pumps, 450 Gal. Holding Tank, Controls, Skid Mtd. S/N 97A013

(2005) CTS Mod. T-280 Cooling Tower, 900,000 BTU/Hr, Air Volume 18,900cfm. S/N 6A2652

(3) (1991) Liebert Mod. DS0-109Y Single-Fan Cooling Condensers (Dry Cooler). S/N's C75-295, N/A, N/A

(2) (2004) Kaeser Mod. CSD75, 75hp Rotary Screw Type Air Compressors, Sound Enclosures, Sigma Electronic Controls, 361cfm, Direct Drive. S/N's 1508, 1507

(2004) Kaeser Mod. CS91, 75hp Rotary Screw Type Air Compressor, Sound Enclosure, Belt Driven, Sigma Electronic Controls, 360cfm.

(2003) Kaeser Mod. KRD400 Refrigerated Compressed Air Dryer, 400scfm, w/(2) In-Line Filters.

(2) (2003) Kaeser Mod. HT-1-725 Compressed Air Dryers, High Pressure, Cap. 300scfm @ 700psig @100°F w/(2) In-Line Filters Each.

Kaeser Mod. KRD300 Compressed Air Dryer, 300scfm @ 100psi @100°F. S/N K300A4603609910074

(2) (2004) Kaeser Mod. N501G, 25hp Reciprocating Booster Air Compressors, 145-190psi, Related Controls, Skid Mtd. S/N's 1003, 1004

(1996) Francois Mod. CE2ASG Reciprocating Air Compressor, 75hp, 475rpm, 600psi High Pressure, 3-Stage, Klocker-Moeller Control Panel, Skid Mtd. S/N 202918

(1996) Zeks Mod. Heat Sink Air Dryer, 200scfm, In-Line Filter. S/N 106275-M396

(2) (2005) Manchester Receiving Tanks, 120 Gal. Cap., Max. psi 700 @ 450°F.

(3) (2004) Manchester Vert. Steel Receiving Tanks, 400 Gal. Cap., 200psi @ 450°F

I.R. Mod. T30, 15hp Tank Mtd. Air Compressor.

Kaeser High Pressure Dryer



(2) Kaeser N501G, 25hp Air Compressors



Francois CE2ASG, 75hp, 600psi Air Compressor

To Be Offered In Bulk & Piece Meal Basis As Part Of Blow Molders.

VEHICLES – Both Days

(2) (2002) International Mod. 8000/8100 Truck/Tractor, Diesel. VIN #'s 531072, 531073

(2) (1998) International Mod. 8000/8100 Truck/Tractor, Diesel. VIN #'s 611642, 608609

(2005) International Mod. 8600 Truck/Tractor, Diesel. Lic. #ESC594, VIN # 53033441

(2000) International Mod. 9100i Truck/Tractor, Diesel. Lic. # DYU620, VIN # 079160

(2) (2002) International Mod. 9100i Truck/Tractor, Diesel. Lic. #'s EEE606, EGT623 VIN #'s 040953, 038936

(1993) Freightliner Mod. FLD112 Tractor, Diesel. Lic. # DVG761, VIN # 445332

(1995) Chevrolet Silverado Pick-Up Truck. Lic. # 2680DE, VIN # 1230267

(1997) Chevrolet Mod. 2500/G20, 2WD, Extended Van. Lic. # 2005DK, 1005020

(2) (1985) Ford Shag Truck Tractors. Lic. #'s 2052CD, 2051CD, VIN #'s 46742, 46743

(1967) International Loadstar 1890 Stake Bed. Lic. # 9521BH, VIN # 237141

(1996) Ford Explorer SUV. VIN # 22509

(1984) Fruehauf 40' Utility Refrig. Trailer. Lic. # 3150SH, VIN. # 079811

(3) Hols. 40' Utility Trailer, Container Types. Lic #'s 6752SF, 3871SE, 1526SG, VIN #'s WS3822, 87210173, 88002

(2) (1986) Lufkin 48' Utility Trailers.

Strick 40' Refrig. Trailer, Container Type. Lic. # 6770SF, VIN # 8061

(1987) Great Dane 48' Utility Trailer. Lic. # 1565SG, VIN # 140141

(3) (1990) Wabash 53' Utility Trailers. Lic. #'s 1358SH, 1359SH, 3535SH, VIN #'s 139820, 398235, 39821

(1995) Alloy 53' Utility Trailer. Lic. #1624SJ, VIN #951734

(1990) American 48' Refrig. Trailer. Lic. # 7417SF, VIN # 3046436

(1987) Great Dane 48' Refrig. Trailer. Lic. # 1387SH, VIN # 141024

(2) (1986) Great Dane 28' Utility Trailers. Lic. #'s 4510SG, 4511SG, VIN #'s 148407, 14840

(1994) Great Dane 48' Refrig. Trailer. Lic. #1586SJ, VIN #148930

(1990) Great Dane 42' Refrig. Utility Trailer, w/Lift Gate. Lic. # 9460SJ, VIN # 146202

(1984) Great Dane 53' Refrig. Utility Trailer. Lic. # 9459SJ, VIN # 123105

(23) Utility Van Trailers.

(2) (1982) Penske 40' Alum. Resin/Dry Bulk Tanker, 4-Compartment, 1500 Cu Ft. Cap. Lic. #'s 1501SJ, 1500SJ, VIN #'s 554156, 554062

(1982) Brenner Water Tanker, SS, 6000 Gal. Cap., Single-Compartment, Lic. # 1586SJ, VIN # 006028

Sale Date Thursday, May 22, 11:00 AM

PUBLIC AUCTION

"DAIRY PROCESSING – BLOW MOLDING"

FEATURING: Pudding Filling & Packaging Lines – Homogenizers – Processing

2 DAY SALE – 2 LOCATIONS

MATANUSKA MAID DAIRY



Cannon 1/3 Gal. Case Packer

DAY 1
DAIRY PROCESSING
814 W. Northern Lights Bl.,
Anchorage, AK

DAY 2
BLOW MOLDING
513 S. Valley Way,
Palmer AK



Dynaplast DB30/125 Blow Molder

STARTING AT 11:00 AM WED. & THURS., MAY 21 & 22

INSPECTION: Mon. & Tues., May 19 & 20, 9AM to 4PM